



**ELECTRIC
PLAYHOUSE
TRAVELS**

THE COLLABORATION



EDG + ELECTRIC PLAYHOUSE

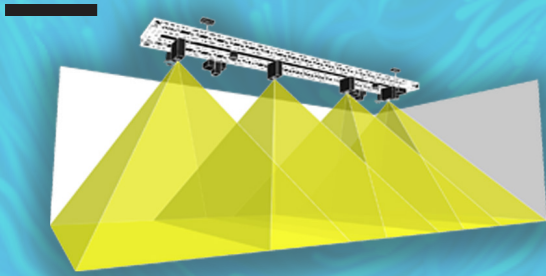
We are thrilled to announce the next positively charged collaboration with New Mexico-based Electric Playhouse. This latest partnership teams up EDG's long-term reputation in the exhibition traveling space, creative entrepreneurial spirit and international cultural prowess with the artistry of Electric Playhouse's digital and immersive designers, developers and creative technologists.

The digital hands-free experience is a mix of games, artistic interactives, and experiences that are ready for exploration. Using projection mapping and sensors, movements are tracked for the interactions without the need for headsets or other wearable devices.

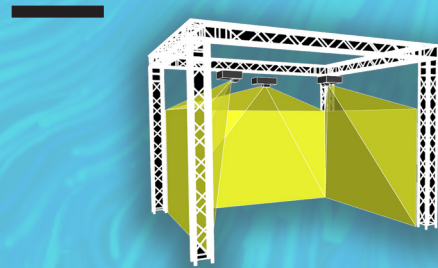
"We have been waiting for the next best exhibition-experience to rival MythBusters, Sherlock Holmes, Beyond Rubik's Cube and Dinosaurs. It is finally here!"

EDG EXHIBITS
DEVELOPMENT
GROUP

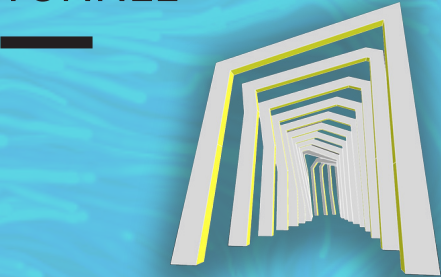
ARENAS



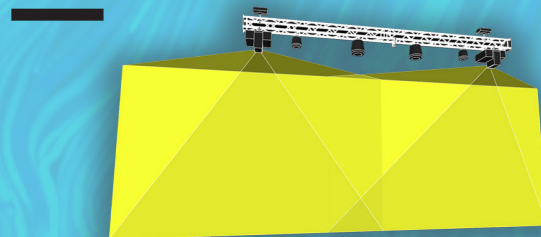
PODs



TUNNEL



FEATURE WALL



THE NUTS AND BOLTS

FLEXIBLE DESIGN LAYOUTS

5,000 sq ft - 10,000 sq ft

THE EXHIBITION CONSISTS OF:

- Two (2) large experience zones, called Arenas
- Four (4) smaller experience zones, called Pods, one of which features a selfie station
- One (1) large accent piece, called Feature Wall
- One (1) LED Lighting entrance Tunnel

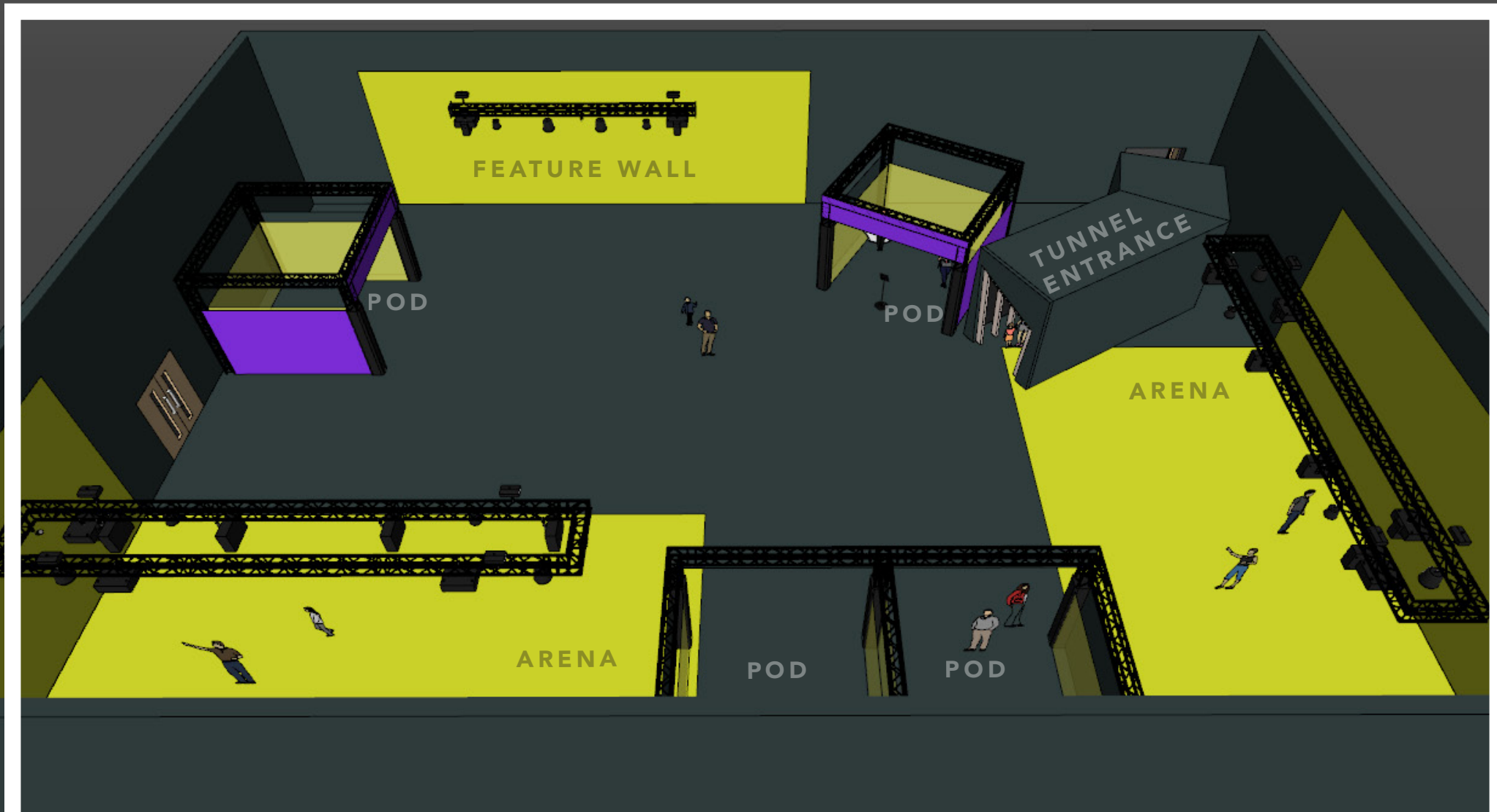
These components are modularly designed and can be arranged to optimize the available gallery space and visitor experience. We will work with your floor plan to draw up a layout that best fits your space.



EDG

ENTRY TUNNEL

A custom LED tunnel with color animations draws guests into the experience, transitioning them from the analog world into the immersive, digital landscape.



EXAMPLE FLOOR PLAN

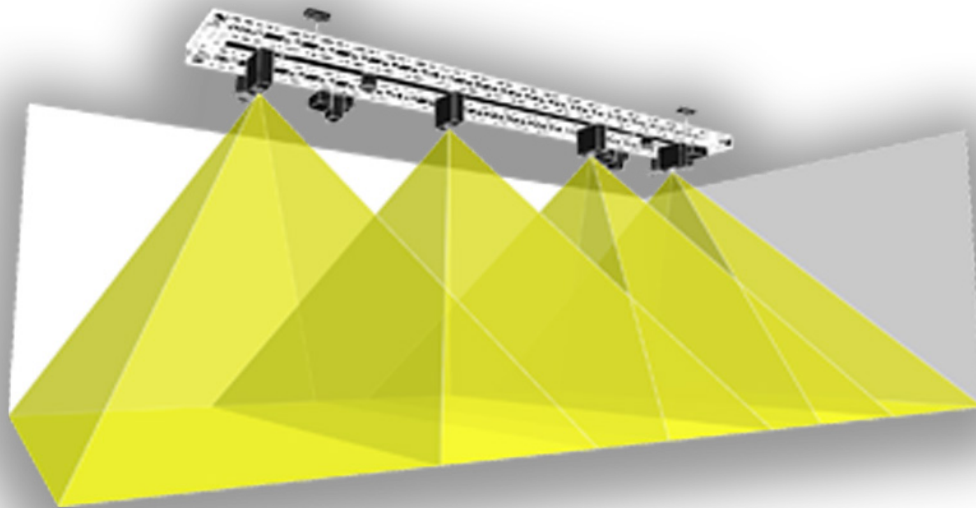


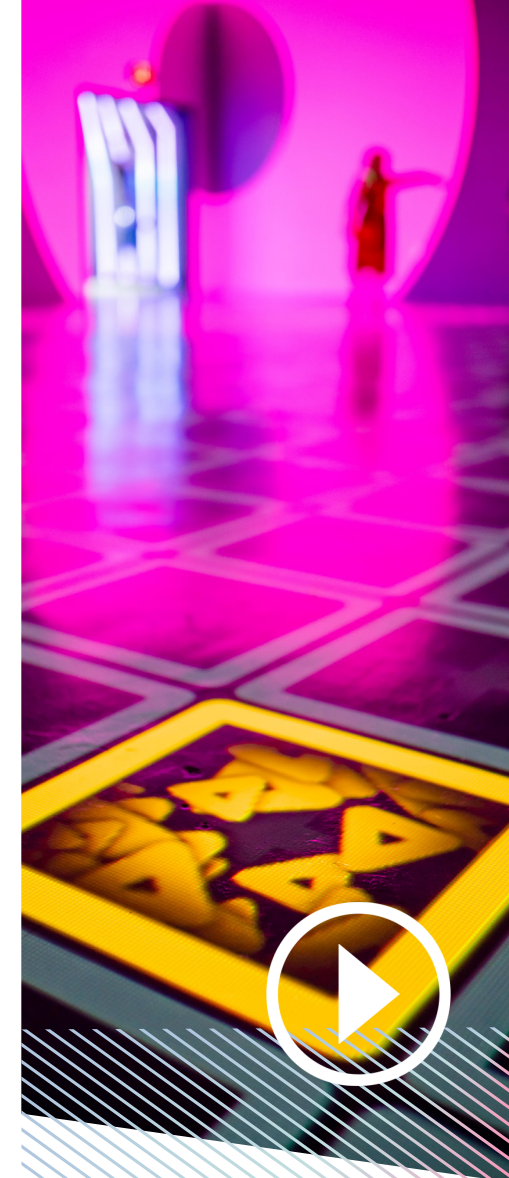
GAMES TO FOSTER INCLUSIVITY, BREAK DOWN
BARRIERS & FUN FOR ALL AGES



06

INTRODUCING THE ARENA GAMES





EDG



GUACAMOLE

Up to 4-player (or 4 Teams) battle to be the first to collect the most tiles. Collect tiles until the vertical wall scoring reaches the top.



EDG



LIGHT HOCKEY

You've heard of air hockey, well this is over-sized and made of pure light! The first side to five - wins! Step, kick and block the puck to try to get it through the goal on the opposite end. The goal size decreases with each goal, making it fun for all ages!



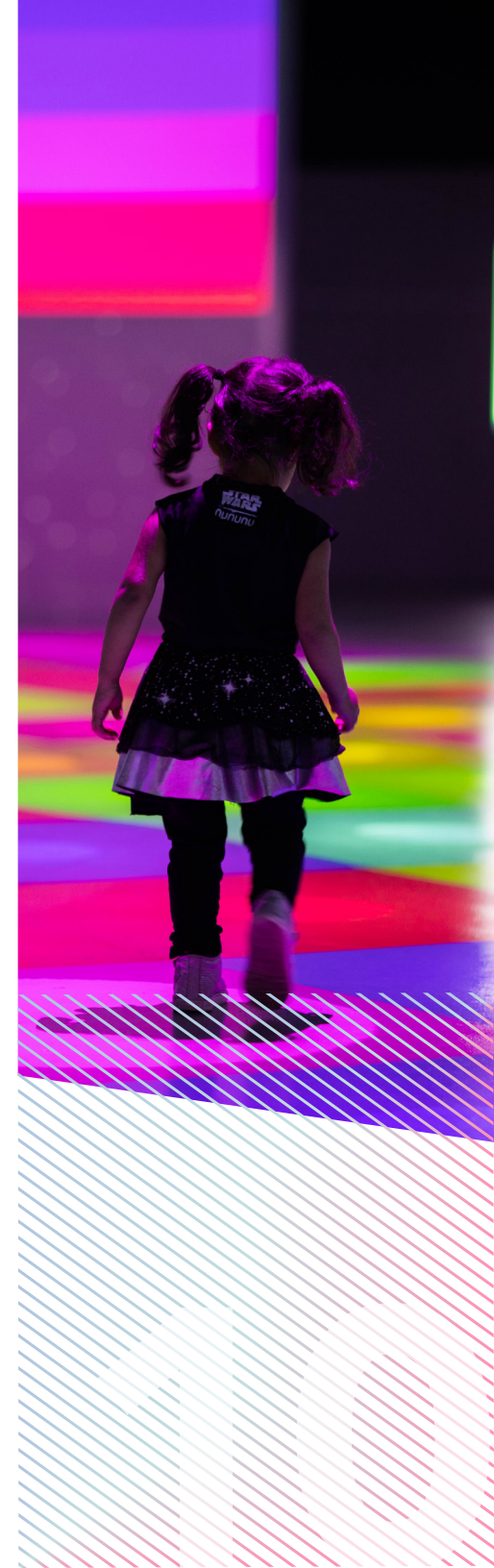
STICK TO YOUR COLOR. simple...right?

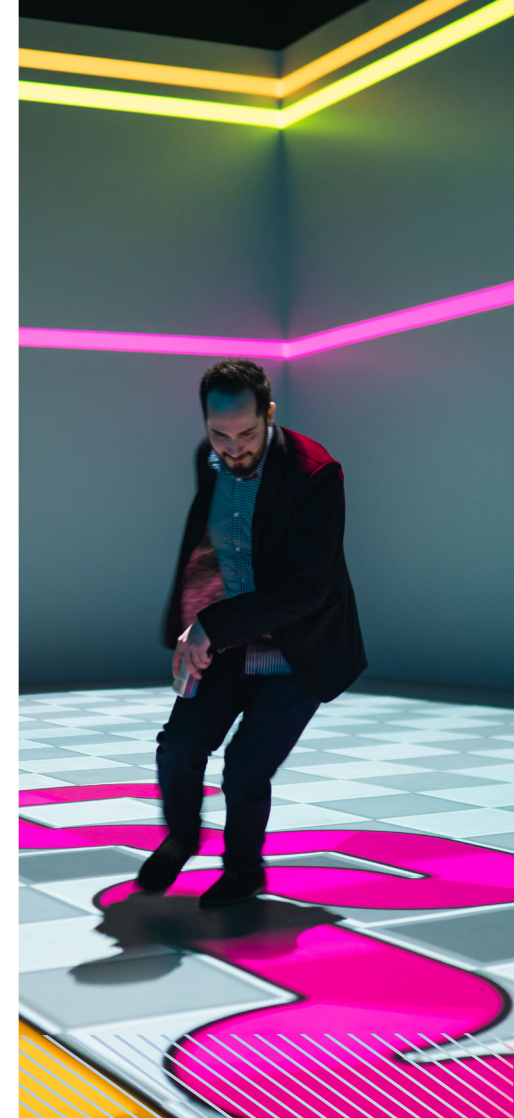


EDG

POWER SLIDE

Multi-players stay within their chosen dot longer than other players to win. Each player picks a colored dot as the game begins. Stay on the chosen colored dot as the dot begins to move around. Movement becomes faster and more unpredictable as gameplay continues.





EDG



REVERSE

Grab up to 7 friends and follow your growing, extending trail to reach the end before anyone else. Its part follow the leader, part maze, and part race!



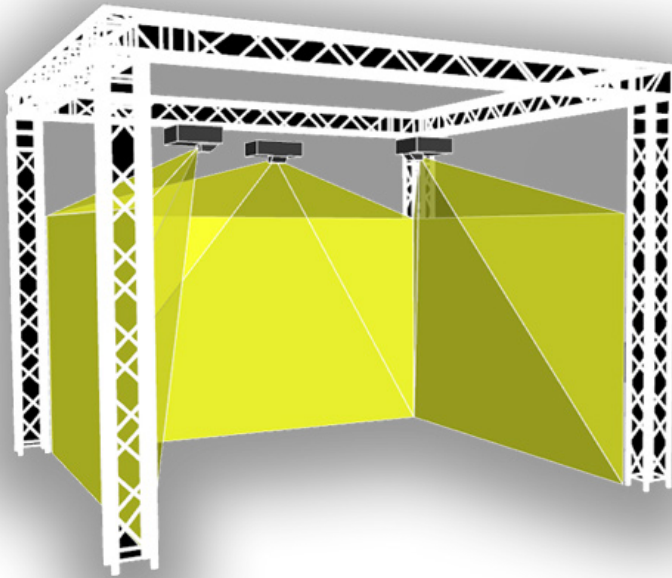
EDG

KING OF THE WORMS

KING OF THE WORMS

An endless game where players battle to grow their worm by grabbing food and avoiding other worms!

INTRODUCING THE POD GAMES



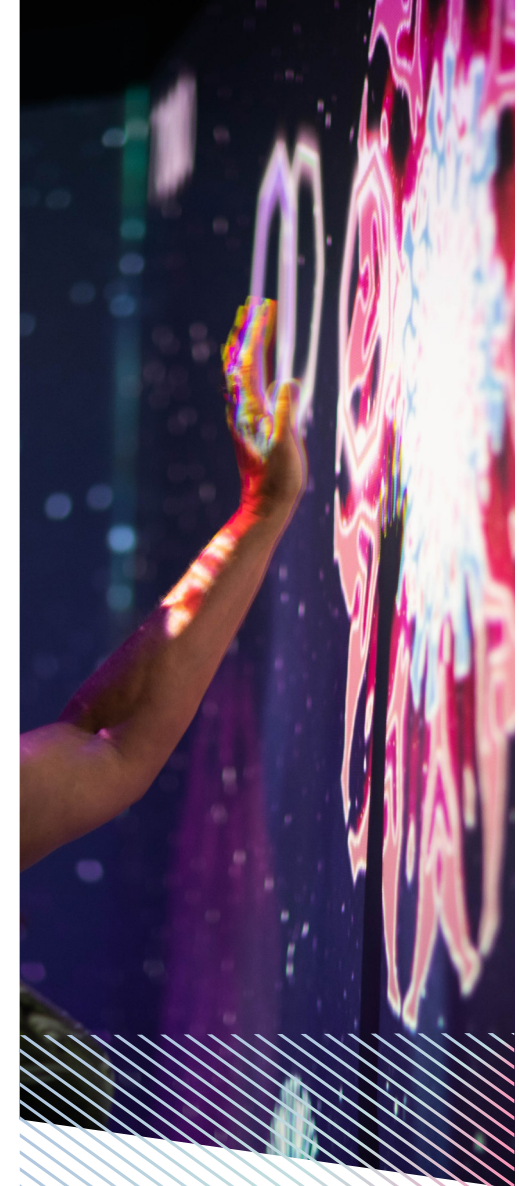
EDG



SPACE RUNNER

Go head-to-head for who can get the highest score! Keep going in the game the longest by, staying on the colored path and adding more time by collecting clocks. Harder than it looks!



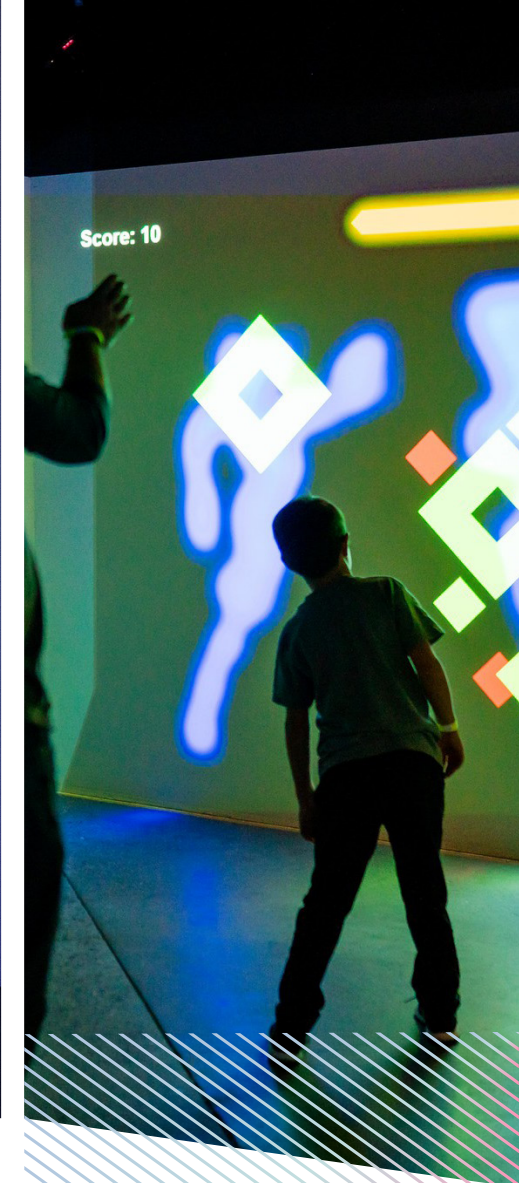


EDG



MANDALA WORKS

Simply touch all the beautiful colorful mandalas before they float to the ground. It gets harder as you go. Fun for a group or alone. This experience is relaxing and visually stunning.



POWER TWIST

POWER TWIST

Move your body into position to score points, and avoid the obstacles. Test your flexibility and twistiness!

EDG



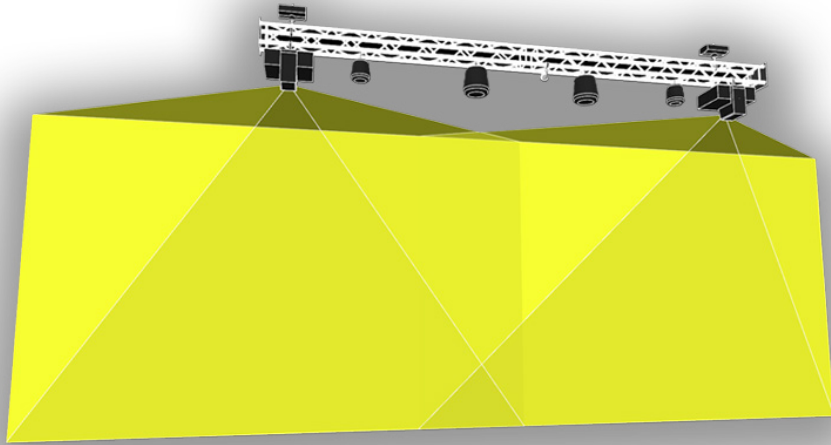
EDG



HIDEY CUBE

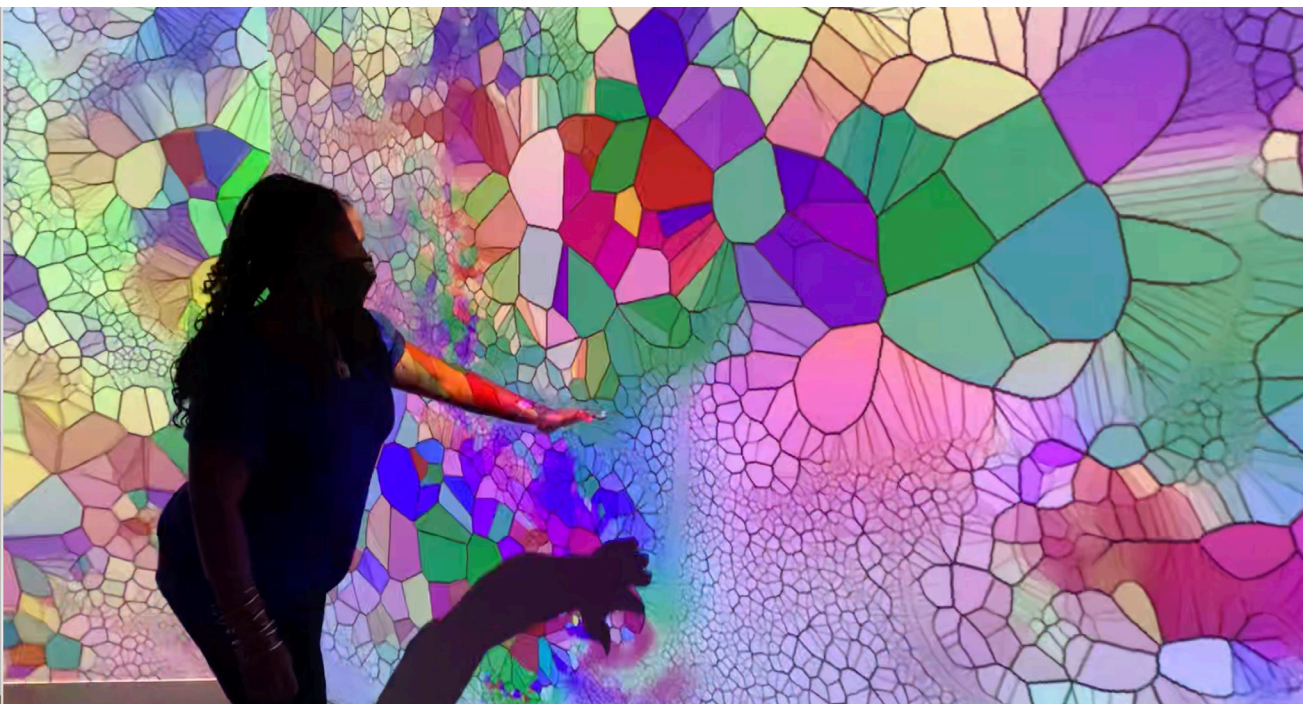
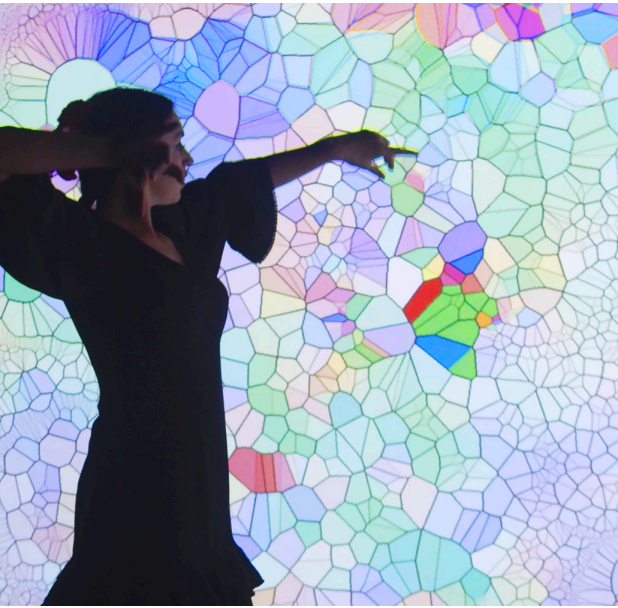
In this spatial reasoning challenge, quickly step left, right, forward or backward into the corresponding target white zone before the timer runs out on the round. Can also be played with a partner for an even greater challenge.

INTRODUCING INTERACTIVE VISUALS



INTERACTIVE VISUALS CAN BE UTILIZED ON THE
FEATURE WALL, ARENAS AND PODS

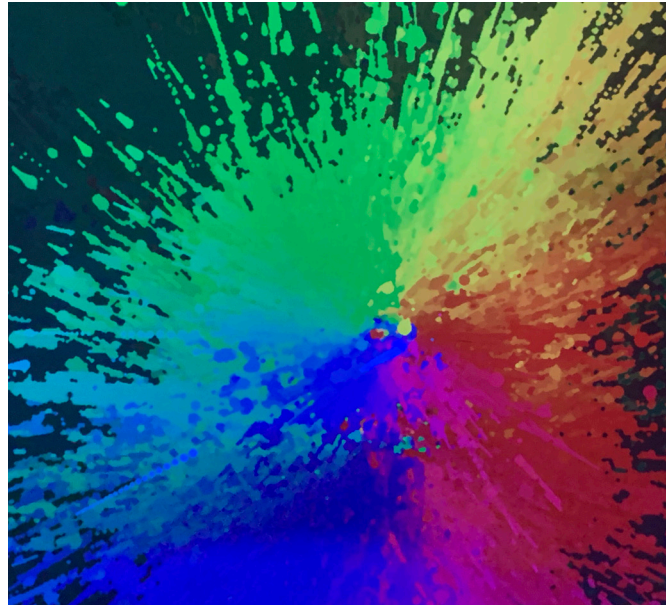
GLASS IS LIQUID



POLLEN STORM



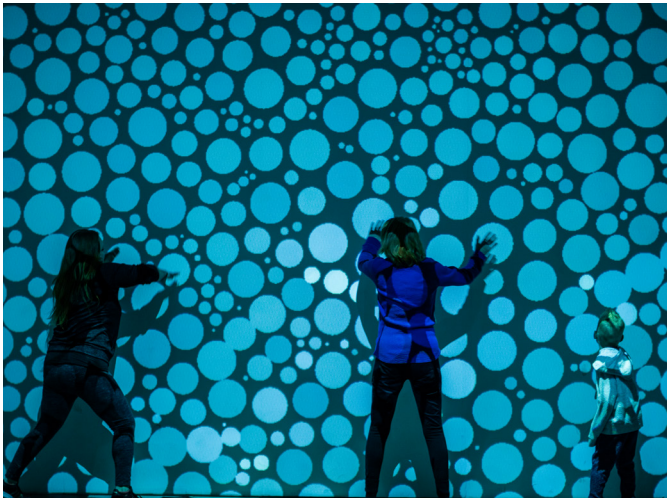
SPLATTER MAKER



LAVA



DOTS



FAUXDIFF



INTERGALACTIC



GLASS GALAXY





CONTENT ENGINES
CUSTOMIZE YOUR CONTENT FOR ANY EVENT




REQUIRMENTS & CONSIDERATIONS

- Black room or the ability to control all lighting including natural light
- Stable internet connection for remote support
- Available electrical, preferably overhead
- Minimum 16 ft. usable ceiling height
- Storage of shipping containers and crates during exhibition duration
- Ceiling mounted rigging points preferred



LOGISTICS

- Exhibition ships in two (2) trucks for North America, three (3) containers for international
- Installation is approximately 10 working days
- De-installation is approximately 5-7 working days



ELECTRIC PLAYHOUSE TRAVELS

COME JOIN THE FUN

FOR EXHIBITION BOOKINGS

EDG EXHIBITS
DEVELOPMENT
GROUP

ELECTRIC
PLAYHOUSE
TRAVELS

Carrie O'Keefe | Director of Business Development

+1 651 222 1121 Office | +1 612 237 5422 Mobile

carrieo@exhibitsdevelopment.com

www.exhibitsdevelopment.com